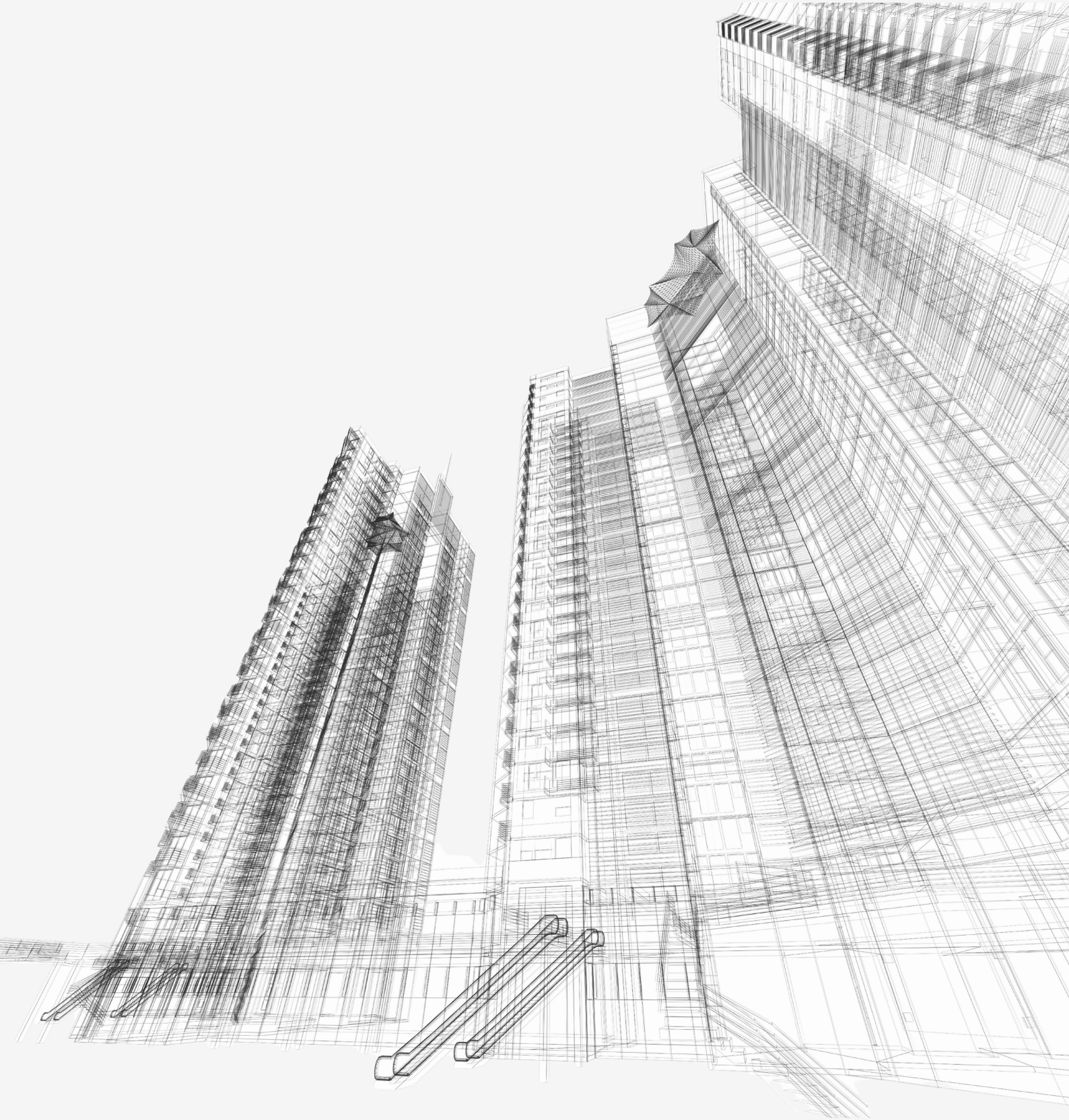




BUILDING PERFORMANCE ANALYTICS



REINVENT DESIGN TECHNOLOGIES LLP

www.rdt-corp.com



ANIKET CHAUDHARI

FOUNDER AND MANAGING PARTNER
REINVENT DESIGN TECHNOLOGIES LLP

ANKITA WAGH

DESIGNATED PARTNER
REINVENT DESIGN TECHNOLOGIES LLP



ABOUT RDT

RDT (Reinvent Design Technologies) LLP is a forward-thinking consultancy firm specializing in Building Performance Analytics. We partner with architects, engineers, developers, and facility managers to enhance the energy efficiency, comfort, and sustainability of buildings across all stages of the project design, construction, and operation.

Leveraging advanced simulation tools and data-driven strategies, RDT LLP provides expert insights into energy modelling, thermal comfort analysis, daylight optimisation, HVAC performance, and decarbonization planning. Our goal is to help clients meet green building standards (LEED, IGBC, GRIHA, ECBC, ASHRAE) while achieving long-term cost savings and operational excellence.

At RDT LLP, we bridge the gap between design intent and real-world performance, turning buildings into smart, sustainable assets.

Through our multidisciplinary services and strategic partnerships, we strive to create buildings that perform better for people, businesses, and the planet

STRATEGIC INTENT

VISION STATEMENT

To drive the transformation of the built environment by connecting design and performance, delivering smarter, sustainable, and future-ready buildings through innovation, analytics, and collaboration.

MISSION STATEMENT

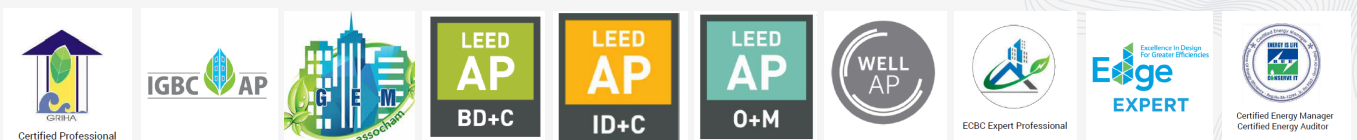
At RDT LLP, our mission is to empower architects, engineers, developers, and facility managers with data-driven insights and advanced simulation tools that enhance energy efficiency, thermal comfort, and sustainability throughout the building lifecycle.

We are dedicated to:

- Driving performance-based design with sophisticated building analytics
- Supporting green building certifications and decarbonization initiatives
- Delivering intelligent digital twin solutions for real-time operational excellence
- Offering expert consultancy, training, and feasibility assessments
- Fostering innovation and informed decision-making at every project stage



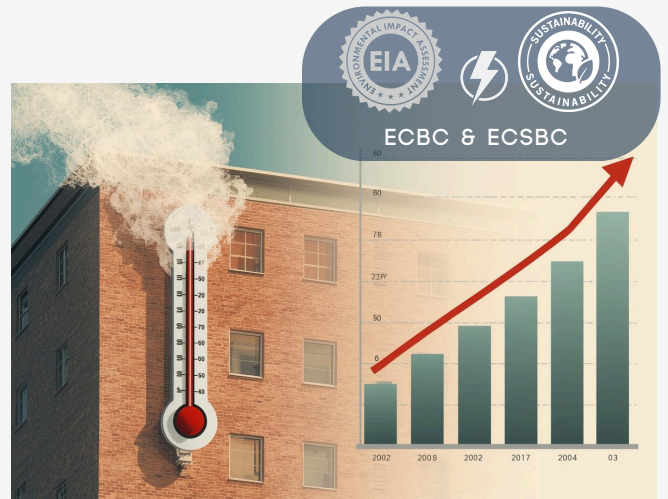
TEAM CREDENTIALS



OUR CORE VERTICALS

1. Sustainability & Compliance Consultancy services

- Green Building Certifications: LEED, IGBC, GRIHA, GEM, EDGE, WELL
- Environmental Clearance Simulations: Shadow, Daylight, HPBD, TIA, CFA, UHIE, CFD
- Building Code Compliance: ECBC, ASHRAE 90.1, EN17037, EN12464, SMC 19.56.020
- Sustainability services
- Custom Simulation & Advisory Services



2. Digital Twin Services

- BIM to BEM Integration
- CAD to BEM Conversion
- Concept-to-Detailed Building Energy Modelling (BEM)
- Thermal Model Auditing, Review & Performance Optimisation



3. Design Support & Feasibility Analytics

- Climate-Responsive Design Optimisation
- Parametric Simulations & Performance Tuning
- Integration of High-Performance Strategies in Early Design
- Technical Support for Architects, Urban Planners & MEP Consultants



4. IES VE Software Sales & Training

- IES VE Software Sales, Demos & Licensing (we are authorised reseller & training partner of IES)
- Comprehensive Training on IES VE Modules
- Project Support & Application Guidance
- New products IES Live, iSCAN, iCD, iVN



DETAILED SERVICES

Green Building Certifications (IGBC, LEED, GRIHA, GEM, WELL, EDGE)

- Project Registration & Documentation Support
- Gap Assessment & Feasibility Studies
- Credit Interpretation & Strategy Development
- Energy & Daylight Simulation, LCA & Carbon Footprint
- Material & Resource Selection Advisory
- Construction & Operation Phase Support
- Measurement & Verification (M&V) Planning
- Audit & Documentation Review
- Coordination with Rating Authorities
- Training & Capacity Building

Environmental Clearance EIA Simulations: Residential, Industrial & Large area development

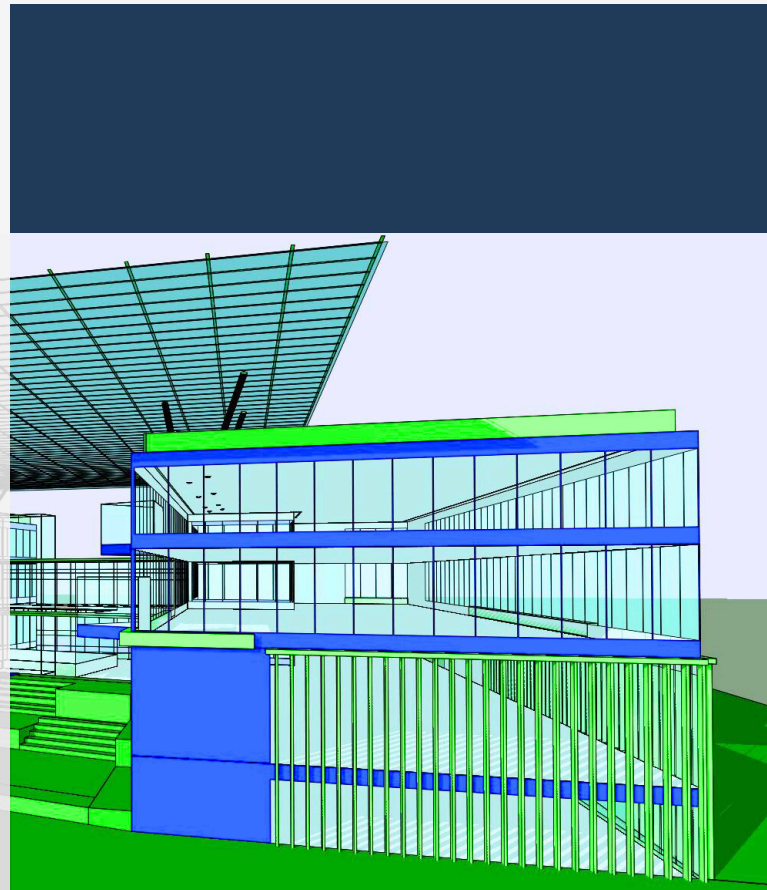
- Shadow Analysis
- Daylight Analysis
- Wind (CFD) Analysis
- Urban Heat Island Analysis
- ECBC Simulation Report
- HPBD (High Performance Building Design) Report
- Traffic Impact Assessment & Evacuation Analysis
- Carbon Footprint Analysis
- Product LCA
- Basement ventilation
- Land Use and Land Cover Report
- Trees & Landscape Report
- Dewatering & Basement Air Cleaning

Building Code Compliance:

- Energy conservation building code (ECBC) & (ECSBC) compliance
- ASHRAE 90.1 code compliance
- EN 17037 Daylight in buildings
- Daylight, right to light, neighbourhood impact, thermal comfort code compliance
- Various global energy & daylight, code compliances

Sustainability services

- Bioclimatic & passive design analysis
- Site planning, building block massing & orientation optimisation
- Sun path, solar exposure (Insolation), shadow analysis
- Building envelope, WWR, shading and fenestration design effectiveness analysis
- Renewable design optimisation
- Daylight & Artificial light simulation & analysis, Glare, UDI, SDA, ASE, VSC, APSH
- Natural ventilation analysis
- Internal & External CFD analysis
- Dynamic thermal simulation and analysis
- Heating & cooling load estimation
- Thermal comfort (indoor & outdoor) analysis, PPD, PMV
- Urban Heat Island & cool roof analysis
- Microclimate analysis, pedestrian wind comfort, PET, UTCI
- LCA & Carbon footprint analysis
- Urban planning and large-scale development environmental impact analytics



OUR ACHIEVEMENTS

275+ Global code compliance projects

GLOBAL CODE MASTERY

825+ Indian code compliance projects

INDIAN MARKET DOMINANCE

14+ million sq.ft Green building simulation area

MASSIVE SIMULATION FOOTPRINT

4+ Projects Across continents

WORLDWIDE OPERATIONS

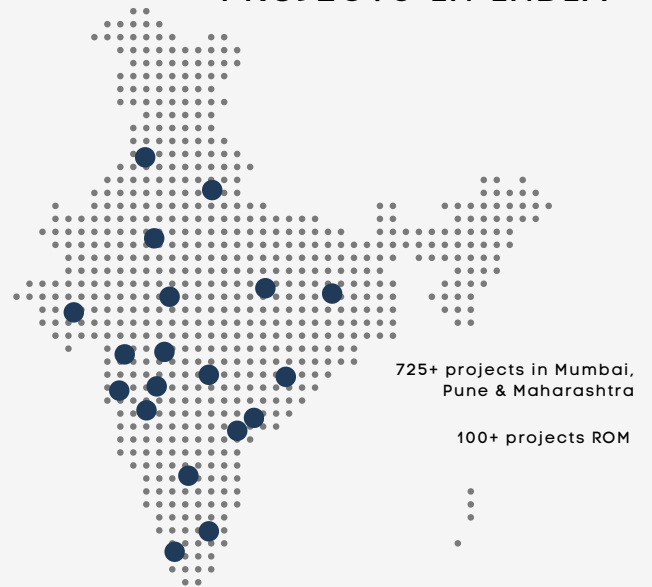
95+ Software sales & Training clients

KNOWLEDGE TRANSFER IMPACT

GLOBAL PROJECTS



PROJECTS IN INDIA



Aniket Chaudhari
Founder & Managing Partner



Aniket Galande
Designated Partner



Gauri Kulthe
Project Manager



Akanksha Oak
Sr. Project Consultant

TEAM
rdt 15+



Simran Pathan
Sr. Project Consultant



Sakshi Ahire
Project Consultant



Tushar Shingane
Project consultant



Jay Amge
Jr. Project consultant



Aditya Rajguru
Jr. Project consultant



Somnath Dhattrak
Jr. Project consultant



Mahesh Hiray
Jr. Project consultant



Rutik Shinde
Jr. Project consultant



Aditya Chandore
Jr. Project consultant



Rushikesh Umbarkar
Jr. Project consultant

SOFTWARE



VE: New Design & Retrofit



IES Live: Building Energy & Carbon Management



iSCAN: In-use Building Data Analysis



iCD: Scalable Energy Analysis



iVN: Local Energy Decarbonisation

AUTHORISED SOFTWARE RESELLER

Reinvent Design Technologies LLP is an authorized software reseller of IESVE in Southeast Asian countries. We have many satisfied customers, including colleges, institutes, architectural and consulting firms, and individuals who have purchased software from us with dedicated support.

AUTHORISED TRAINING PARTNER

Reinvent Design Technologies LLP is an authorized training partner (ATP) of IESVE in Southeast Asian countries. Trainers with over 10 years of experience in using the IESVE software have successfully conducted effective hands-on training sessions for many consulting and design firms, institutes, and colleges to date.

IES VE SOFTWARE PACKAGES

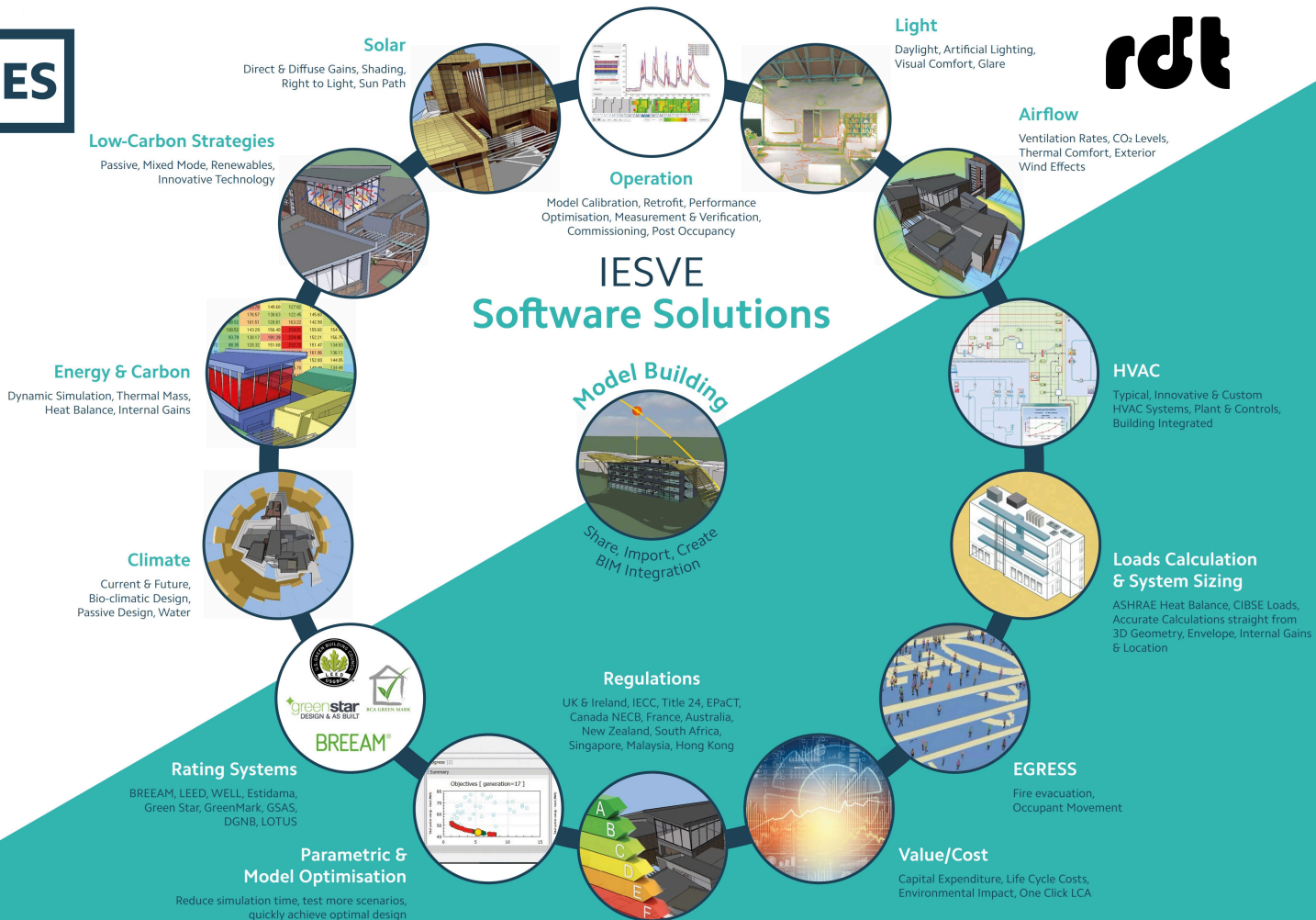
ESSENTIAL

PROFESSIONAL

EXPERT

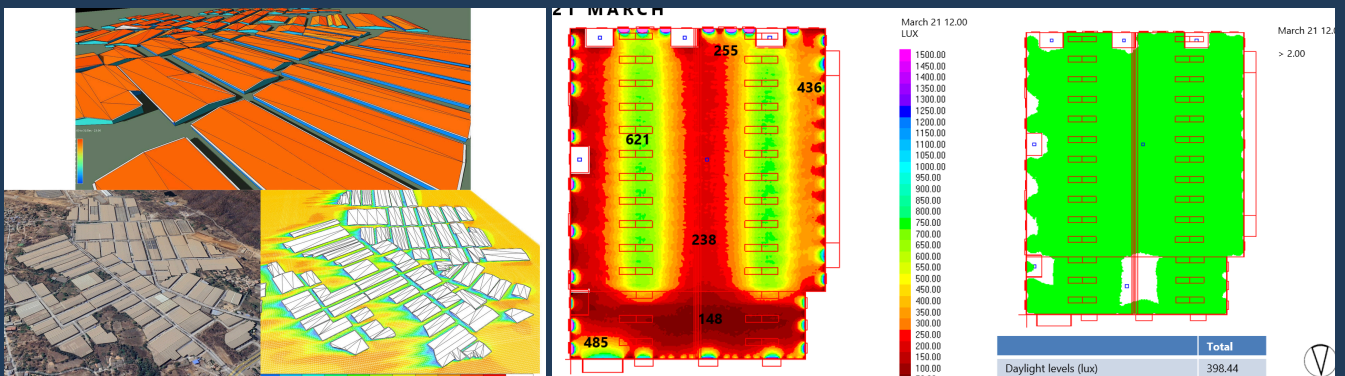
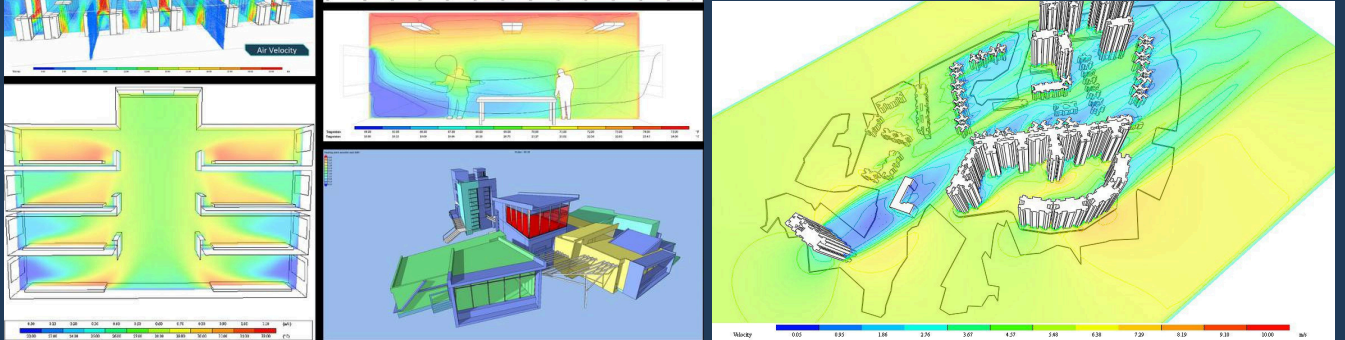
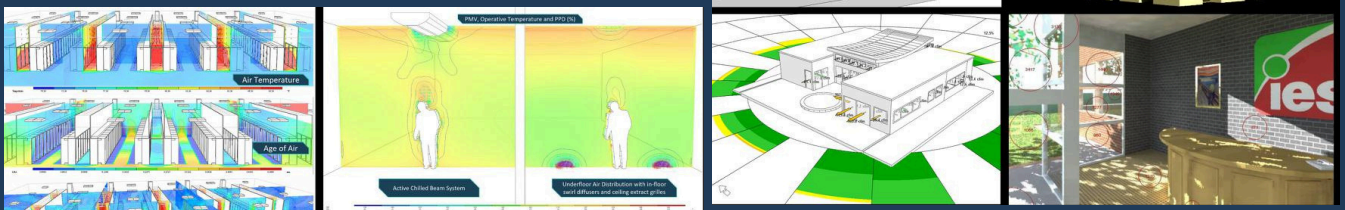
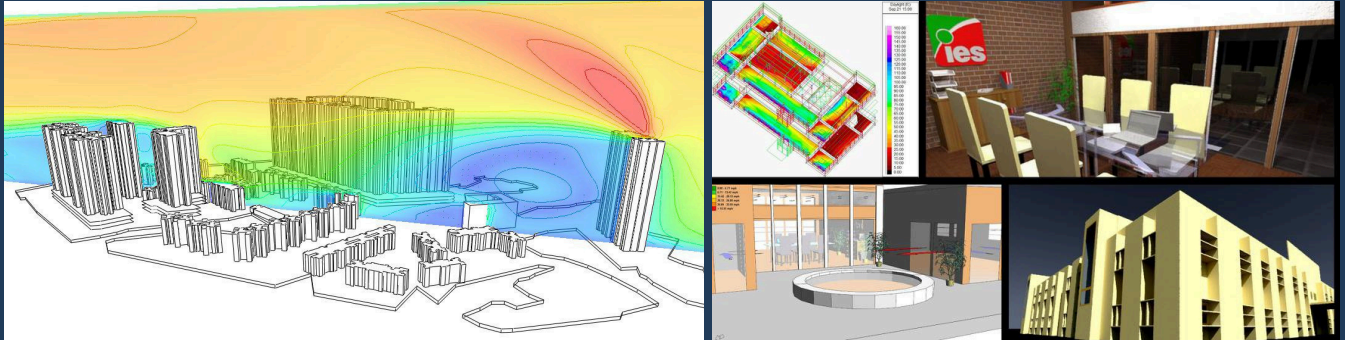
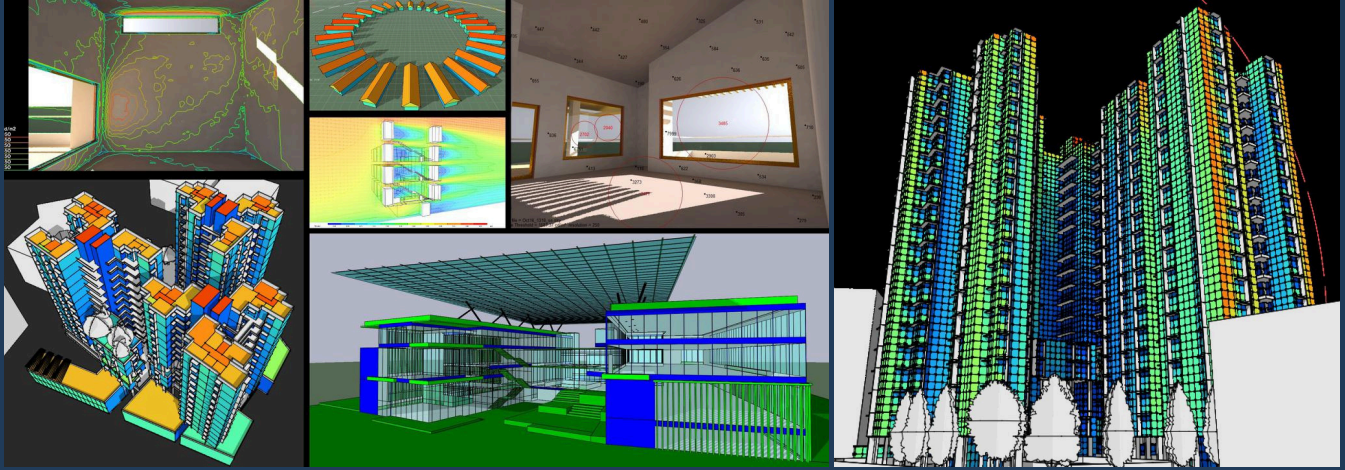
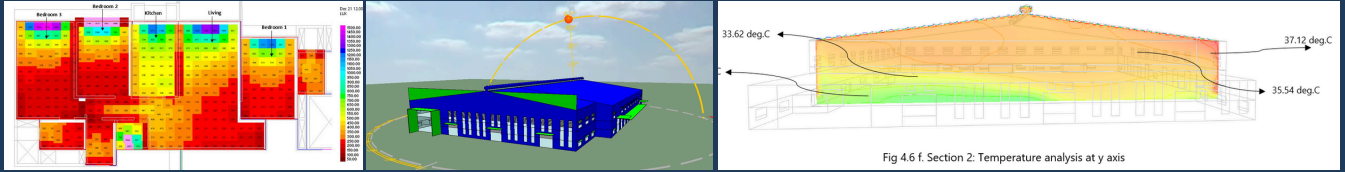
FULL VE SUITE

contact us: contact@rdt-corp.com



SIMULATION & ANALYSIS CAPABILITIES OF IESVE

BUILDING PERFORMANCE ANALYTICS



OUR CLIENTS



CONNECT WITH US!





www.rdt-corp.com

 contact@rdt-corp.com

 +91 9820941094, +91 9028697110

 Office no. 304, 3rd floor, Swapnali CHS, Kothrud, Pune 411039

 Office no. 10, Shyama Homes, Besides Ashoka Medicover Hospital, Indira nagar, Nashik 422009